



YieldPro™ — turn your SAM scans into 3D

Drag-and-drop your c-scans folder.
Explore, slice and share in minutes.

Visualise depth and amplitude
with colour-coding

Compare depth layers for failure
analysis and delamination

Get 3D measurements: distances,
 ΔX , ΔY , ΔZ and coordinates

Cut out non-relevant
areas and spotlight ROIs

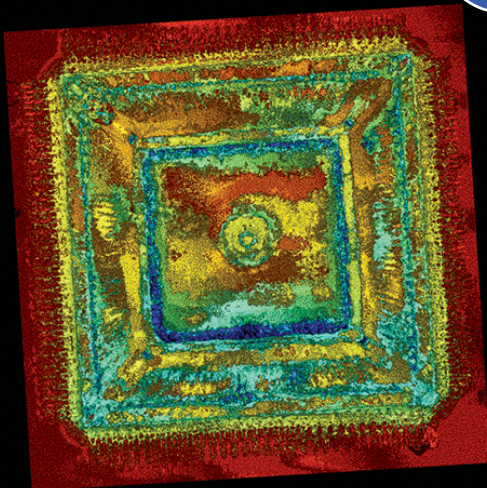
Defects

Create instant 3D sections
with live clipping planes

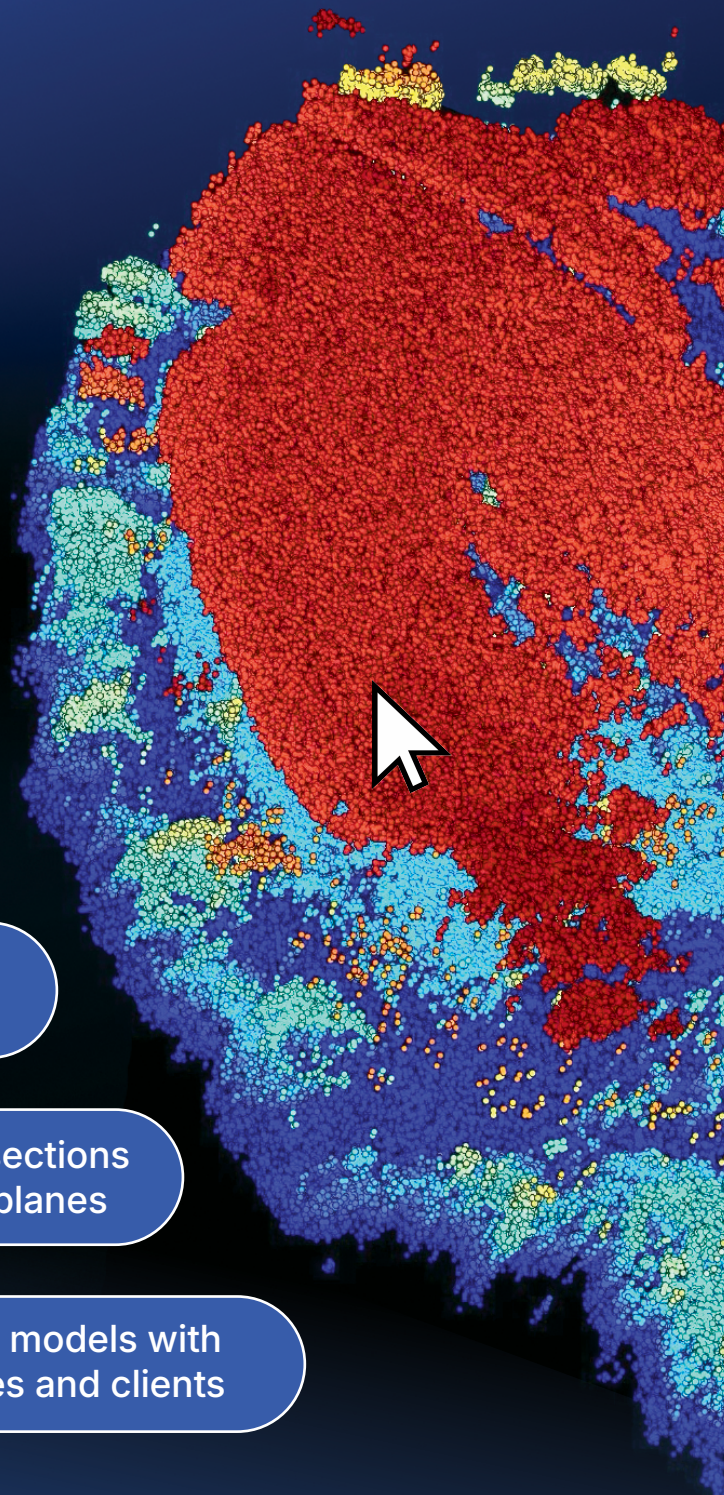
Share 3D models with
colleagues and clients

Interface languages:
English | Français | Deutsch | 简体中文

<http://scientificvisual.ch/software>

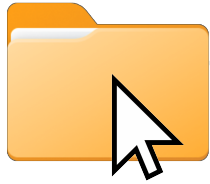


Map



HOW IT WORKS

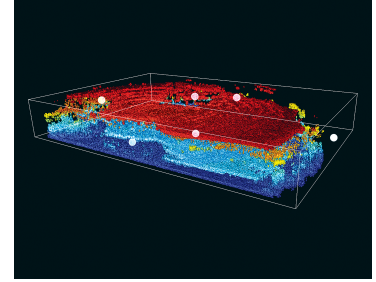
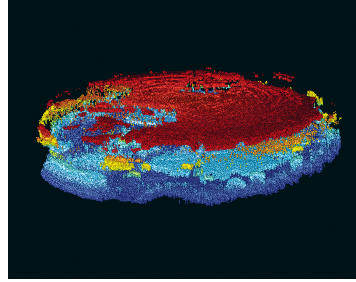
Drag your scan folder into YieldPro™ to reconstruct a 3D volume. The software reads the scan settings and assembles a navigable 3D volume from c-scans. Tune model parameters as needed.



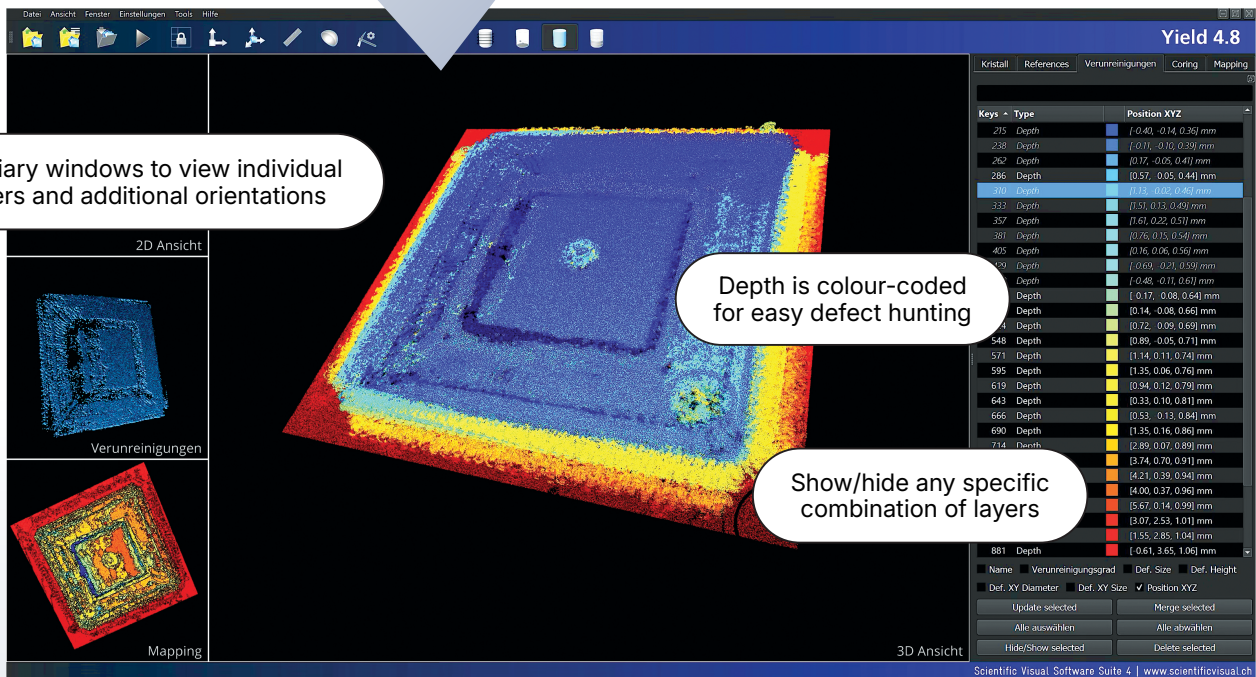
3D SLICING AND CLIPPING



Move the clipping plane to watch features evolve in space.



3D VISUALISATION OF SAM DATA



3D MEASUREMENTS



Measure distance by double-clicking any two points on the model.



Toggle between Perspective and Orthogonal views, and set custom grid parameters.

